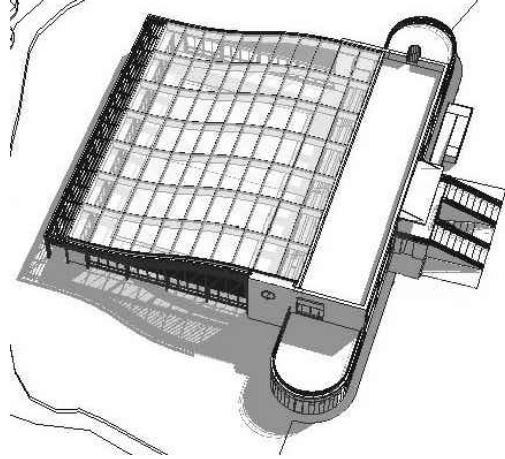




**IMPIANTO COMUNALE PER IL NUOTO**

**PROGETTO DEFINITIVO**



**PROSPETTI E SEZIONI**

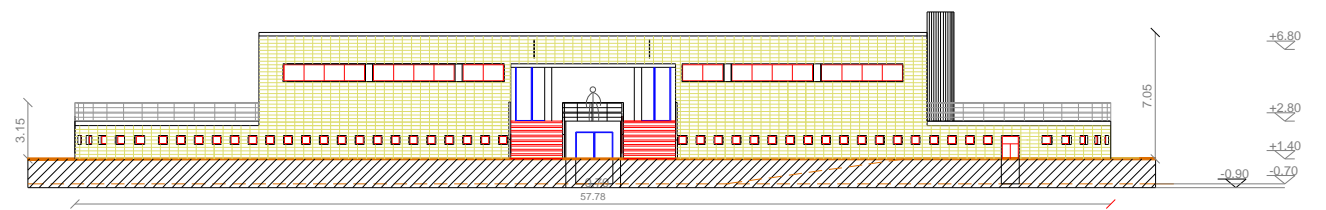
Gruppo di lavoro  
Arch. E. Barbera, Ing. M. Panini,  
Arch. V. Tomassetti

RESPONSABILE PROGETTO  
ARCHITETTONICO:  
Arch. V. Tomassetti  
Collaboratori  
Arch. L. Violo, Arch. L. de Stasio,  
Ing. M. Marino, Dott. A. Asprella

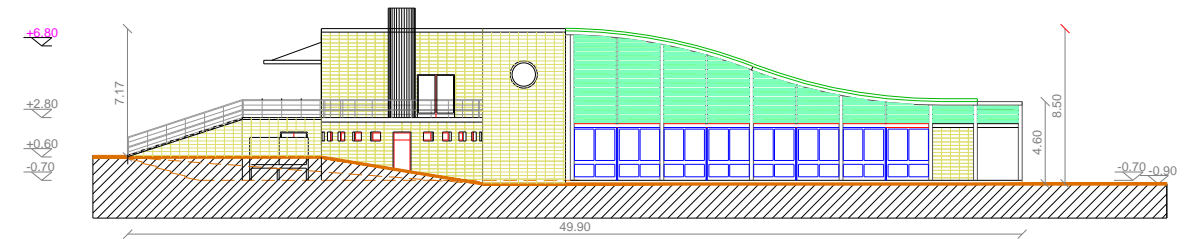
TAV. N°  
**7AD**

scala 1:200

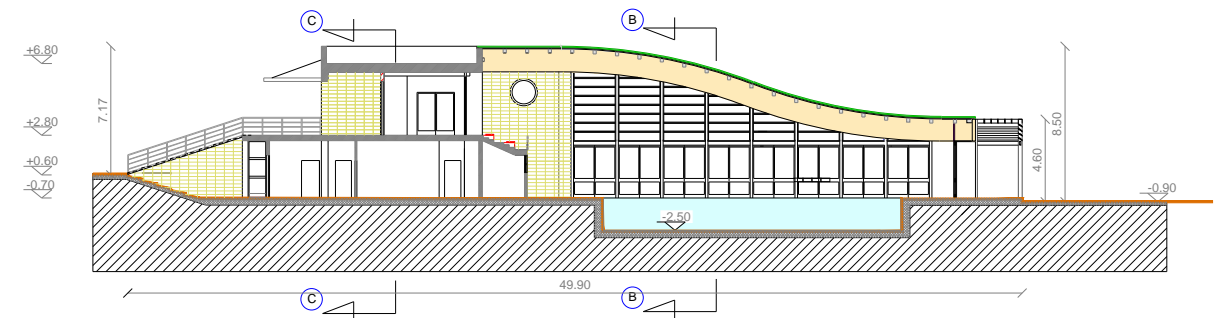
REV.	DESCRIZIONE	DATA	ELABORATO	VERIFICATO	APPROVATO
		Luglio 2005			



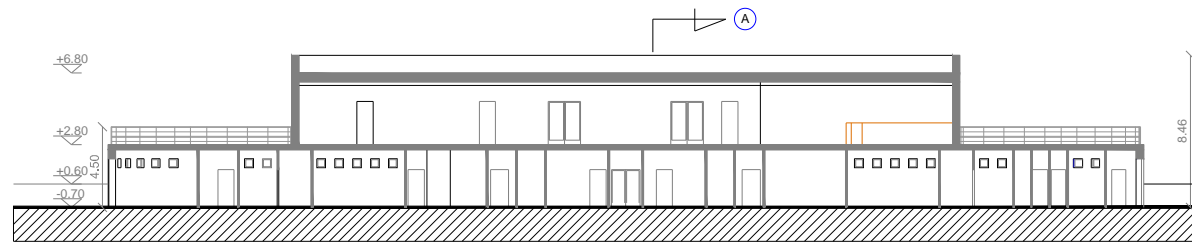
Prospecto Anteriore



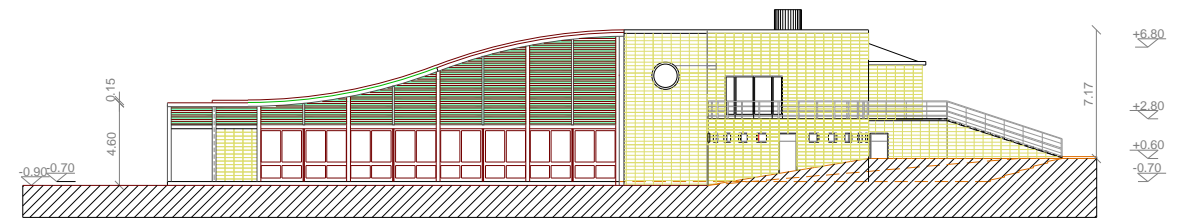
Prospecto Laterale



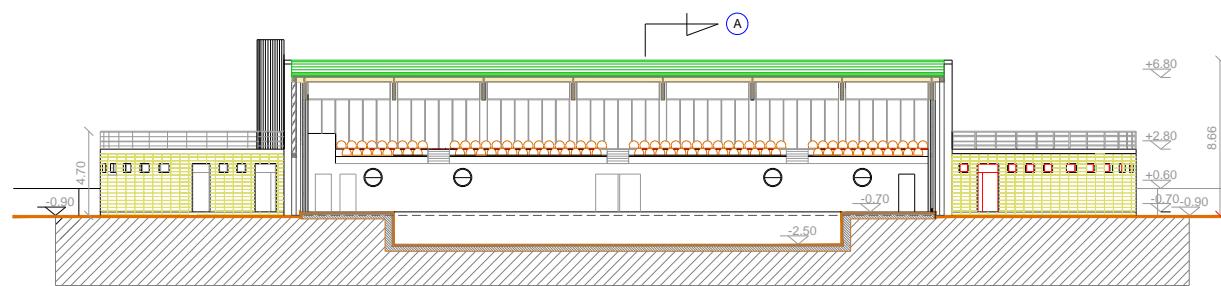
Sezione trasversale A-A



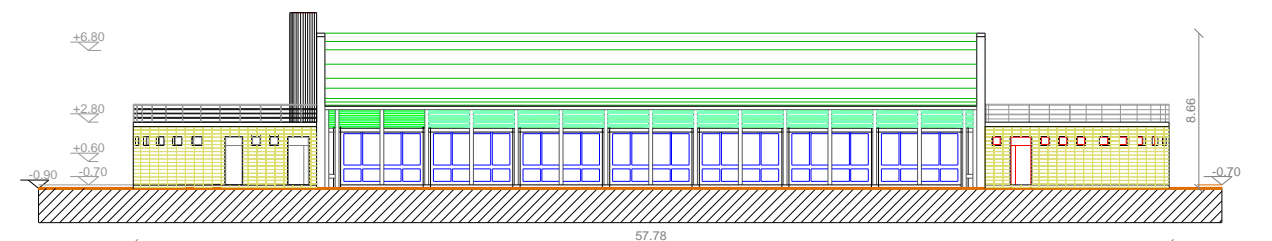
Sezione Longitudinale C - C



Prospecto Laterale



Sezione Longitudinale B - B



Prospecto Posteriore

